

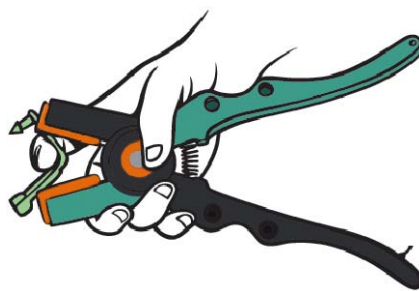
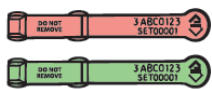
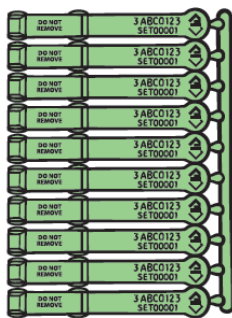
Instructions for applying Shearwell SET (Sheep) Tags

Shearwell
New Zealand

Animal Identification
& Management Systems

IT is important to pay attention to the correct tagging procedures when tagging sheep. Generally sheep should not be tagged when fly strike is likely. Tagging at birth is recommended; however it is appreciated that not all flocks can be tagged at birth.

1. Applying tags correctly first time avoids the cost and inconvenience of re-tagging.
2. You must use an applicator that is designed to apply SET tags. A suitable applicator can be purchased when you order your tags. If an incorrect applicator is used, tag retention will be compromised.
3. SET tags are delivered in strips of sequentially numbered tags. Remove a tag from the strip and load the tag in the applicator, making sure each end clicks into place.



4. Dip the jaws of the applicator holding the tag into antiseptic or disinfectant solution prepared at the correct dilution. Do not immerse the whole strip of tags.

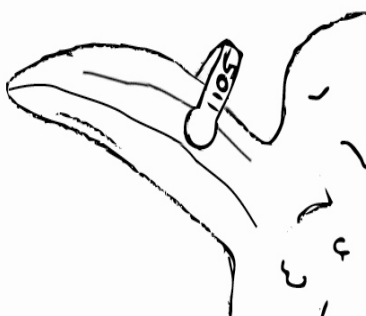
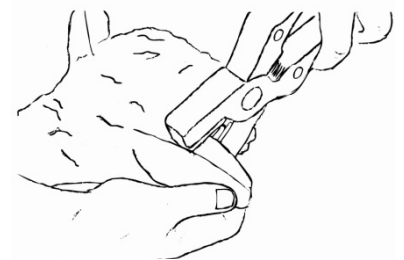
5. Hold the sheep securely

6. In young lambs, place the tag on the upper edge of the ear (this is the strongest edge), 1/3rd from the base and 2/3rd from the tip.

7. For older sheep it may be necessary to apply to the back of the ear if the top is too thick but allow room for growth if the animal is still young.

8. Always place with the portion of the tag containing the microchip on the inside of the ear. For this to occur, the pin must always be inserted from the upper side of the ear.

9. Avoid piercing the ridge of cartilage along the top of the ear, as this may deform the ear and may also result in infection.



10. When tagging sheep remember that the ear will grow. For this reason, when tagging young lambs, leave 4 – 5 mm of space between the loop of the tag and the ear. If tagging in the back of the ear more room may be needed.



If you would like to report any positive comments or problems about these tags please contact us at www.shearwell.co.nz